

Sliding Scale Information

Thank you for your interest in our sliding scale option for your pregnancy and birth investment. Community Roots Midwife Collective (CRMC) has strong intentions of providing midwifery service to all people, with the hope of reducing financial barriers to our care. This goal will require the participation of many, including national and local organizations who support the Midwives Model of Care™, local health care advocates, and birthing people and families in our community who want to support greater access to midwives. Due to the generous contributions of our supporters, donors and grants, CRMC is grateful to offer scholarships/sliding scale discounts for families in need, when there are funds available.

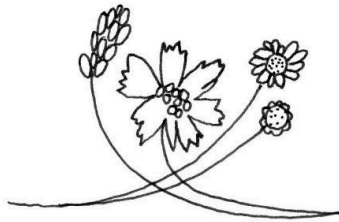
For a sliding scale to work, it relies on the principles of truthfulness, respect for complexity, and accountability. We ask you to consider the idea of **sacrifice** vs **hardship** when examining your access to our care. If paying our fee of \$6000 would be difficult, but not detrimental, it could qualify as a **sacrifice**. You might have to cut back on other spending (such as going out to dinner or buying coffee), but this will probably not have a long-term, harmful impact on your life. It is a sacred sacrifice in order to pursue something you are called to do. If, however, paying our average fee would lead to a harmful impact on your life, such as not being able to put food on the table, pay rent, or pay for your transportation to work, then you are dealing with **hardship**. Folks coming from a space of hardship typically qualify for the lower end of the sliding scale.

The concept of sacrifice vs hardship is a very useful nuance when talking about one's ability to afford/access something. It recognizes and respects that paying for something might still be a challenge even if it is just a short-term one, while giving appropriate space for those who are dealing with financial hardship. **We also ask you to consider paying for services if you have the means to do so.** The midwives of CRMC believe that all people should have access to midwifery care, and have agreed to work on a sliding scale. Please consider our commitment when choosing the appropriate spot on our scale.

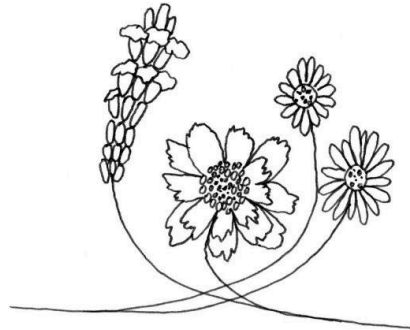
If you feel you qualify for one of our sliding scale grants, please let us know and we will give you an application that will be reviewed by The Friends of CRMC sliding scale committee.

Here are some general guidelines to help you determine where you may fall on our sliding scale.

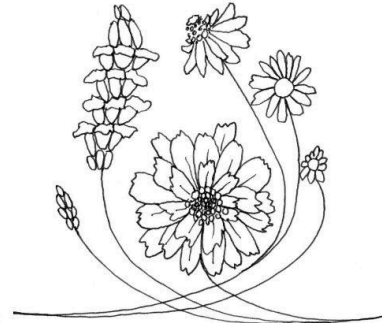
\$500- \$5999



\$6000



Above \$6000

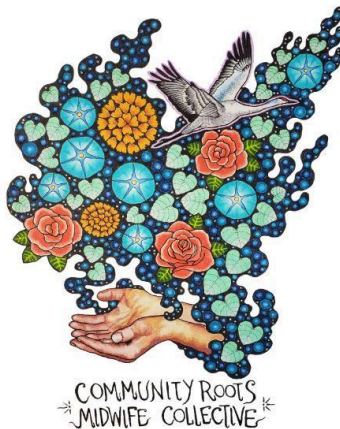


We acknowledge that there are folks whose economic circumstances would prevent them from accessing midwifery care, if there was not a deliberate opportunity made for them to access services at a cost that is reflective of their economic realities. If you struggle to maintain access to needs such as health care, housing, food, child care and are living paycheck to paycheck or are in significant debt, you may belong here.

You deserve the same access to care as those who can afford to pay more. However, if you can ask others for financial support, such as family members, partners, or friends, please consider using those personal resources before you use the resources of the sliding scale which could limit opportunities for others.

This is the Community Standard price.

If you are struggling to conquer debt or build savings or moving away from paycheck to paycheck but have access to steady income and are not spending most of your time thinking about meeting basic needs such as food, shelter, medical care, child care, etc., you may belong here.



This category is for people who want to help fund the lower-cost births and expand our midwifery services. This person wants to help financially support CRMC's mission and social vision to provide for anyone who wants midwifery care and a homebirth.

If you have access to financial security, own property or have personal savings or you are able to pay for "wants" and spend little time worried about securing necessities in your life, this category may be appropriate for you, as you may have economic privilege and strength in our community.

*If you want to receive a tax deduction receipt for the amount you pay above

Generosity is the flower of justice.

- Nathaniel Hawthorne